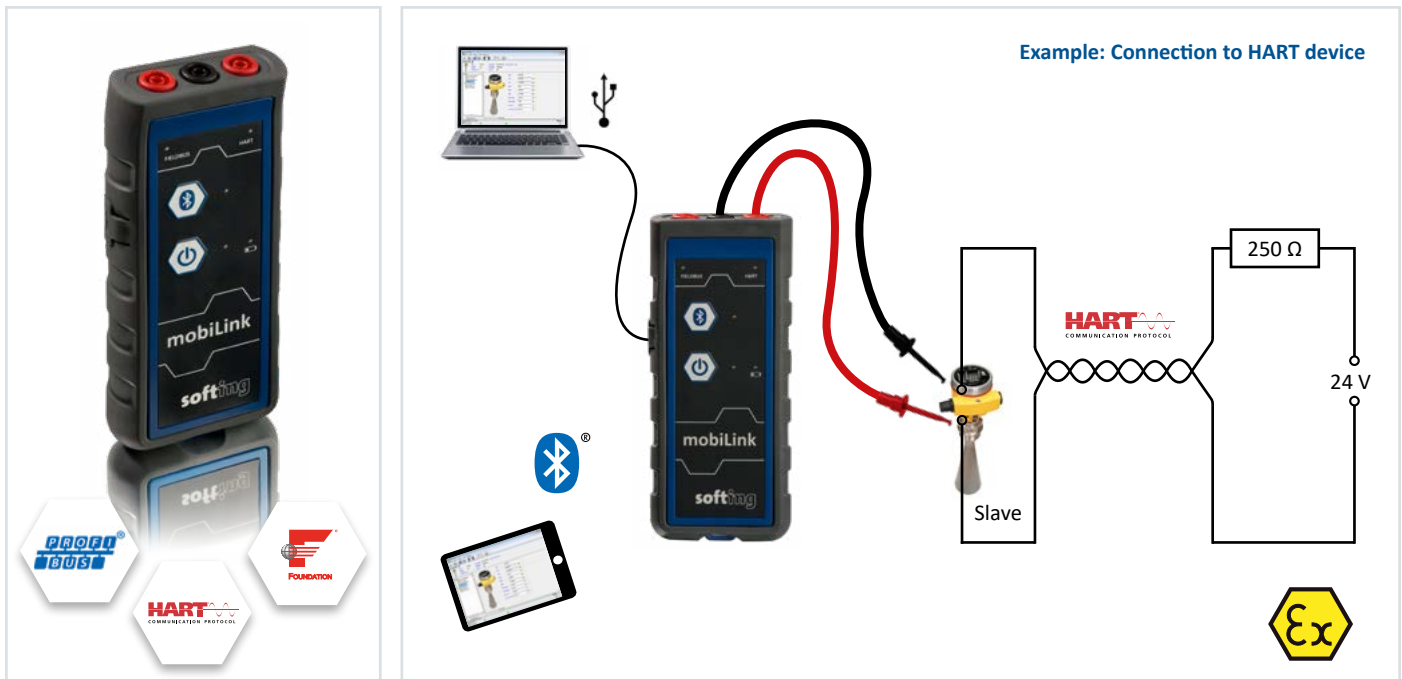


# mobiLink

## Mobile Commissioning and Maintenance Interface for Field Devices

- Single interface for the major Process Automation protocols:  
HART / FOUNDATION Fieldbus / PROFIBUS PA
- Perfectly suited for handheld host devices due to battery powered Bluetooth operation
- Compatible with FDT Frame Applications
- Approved for use in hazardous areas



### Multi protocol operation

- HART Master, FOUNDATION Fieldbus Host and PROFIBUS PA Master included in one device
- Temporary attachment to fieldbus segments or HART loops for individual interaction with field devices
- Fully compliant protocol implementations allow for interference-free access to running plants

### Host communication via Bluetooth or USB

- Built-in batteries and Bluetooth communication enable use of handheld host devices like smart phones and tablets
- USB interface for bench host operation

### Support of FDT Frame Applications and major Engineering Tools

- PACTware FDT Frame Application and HART Communication DTM included
- Communication DTM for FOUNDATION Fieldbus and PROFIBUS PA (optional)
- FOUNDATION Fieldbus configuration tool (optional)
- Application Program Interface for integration into Engineering Systems

### Suitable for use in hazardous areas

- IECEx and EX approval for Zone 1
- Suitable for connection to intrinsically safe circuits
- Suited for harsh environment

## Technical Data

<b>Supported Applications</b>		Endress + Hauser FieldCare for HART, PROFIBUS PA and FF devices; Pactware for HART, PROFIBUS PA and FF devices; ProComSol DevCom for HART and FF devices; Emerson AMS Device Configurator for FF devices
<b>User Interface</b>	Controls Status LEDs	Power on/off button, Bluetooth pairing button FIELDBUS (Fieldbus mode), HART (HART mode), Bluetooth (Pairing/Bluetooth active), Low battery, Power on
<b>Interfaces and Connectors</b>	USB  Bluetooth Fieldbus    HART	Speed: USB 2.0 Full Speed, Connector: USB Type C Electrical: Non intrinsically safe. Do not use inside hazardous areas. 5 V, 100 mA. Um = 253 V Dual Mode (BT Classic and BLE), 2.4 - 2.478 GHz, Output Power: +8 dBm (maximum) Connection: 4 mm banana type jacks (red/black), polarity has to be observed Physical Layer: according to IEC 61158-2, Type 1: 31.25 Kbit/s, voltage mode Nominal input current (Fieldbus): 10 mA in Bluetooth and regular USB mode 18 mA (with fieldbus voltage > 9,5V) for increased battery life time in USB mode (controlled by application) Fieldbus Terminator: No built-in fieldbus terminator Connection: 4 mm banana type jacks (red/black) Physical Layer: HART FSK compliant modem
<b>Operation in Hazardous Areas</b>	Intrinsic Safety Parameters IECEX ATEX	EX ia IIB, Ui = 30 V or FISCO field device Isolation: 1500 VDC between USB and Fieldbus, 1500 VDC between USB and HART Ex ib [ia Gb] IIB (HW version 1.00), IIC (HW version 1.01) T4 Gb; Ex ib [ia Da] IIIC T100°C Db II 2G Ex ib [ia Ga] IIB (HW version 1.00), IIC (HW version 1.01) T4 Gb; II 2D Ex ib [ia Da] IIIC T100°C Db
<b>Physical Properties</b>	Dimensions (L x W x D) Weight Power Supply   Operating Temperature Storage Relative Humidity Protection Class	175 mm x 74 mm x 32 mm 330 g (incl. Batteries) Battery: 3 * Alkaline, IEC-LR6, nominal voltage 1,5 V For use in hazardous area: Energizer E91 or Duracell Procell MN1500. With batteries of other types or manufacturers certification is void. Fieldbus interface (Medium Attachment Unit) powered by fieldbus. -20°C .. +50°C Store batteries in a dry place at normal room temperature. < 95% rH non condensing IP 54 (if USB port covered with cap)
<b>Certifications</b>	Ex EMC/Radio ROHS	ATEX, IECEX, FM, PCEC, KC, EAC, PESO CE, FCC, SRRC, ETA, MIC, KC, EAC, TRA UAE

## Scope of Delivery

Hardware	mobiLink, USB cable, fieldbus cable set with clips, 3 * Alkaline IEC-LRC6
Software	mobiLink Manager, PACTware, Communication DTM for HART, Foundation Fieldbus, PROFIBUS PA, Yokogawa Interface and FDI CommServers (for Foundation Fieldbus and PROFIBUS PA optional license required) Foundation Fieldbus Configuration Tool ComConf (optional license required)
Documentation	User Guide, Quick Start Guide

## Order Numbers

DBA-KM-020410	<b>mobiLink</b> for HART applications, including accessories
LRA-KK-021973	<b>linkPlus FF</b> – License to activate Foundation Fieldbus
LRA-LL-021974	<b>linkPlus PA</b> – License to activate PROFIBUS PA
LRA-KK-020721	Licence for FF Configuration Tool ComConf (linkPlus FF required to be able to use the ComConf Tool)

## Additional Products and Services

LRA-MM-020670	<b>DevComDroid HART</b> – Android application for HART device communication
LRA-MM-020671	<b>DevCom2000 HART</b> – Windows application for HART device communication
LRA-KK-020673	<b>DevComFF.Win</b> – Windows application for FF device communication
LRA-MM-020672	<b>DevCom.iOS HART</b> – iOS application for HART device communication

Your local Softing contact:

<http://industrial.softing.com>

optimize!  
**softing**