

Release Notes

TH SCOPE

Version 3.70

June 2020

1. Components of Current Product Version

Component	File name	Version
TH SCOPE	Install32_TH_SCOPE.exe	3.7.0.0
TH SCOPE	Install64_TH_SCOPE.exe	3.7.0.0

Related Documentation

Title	Language	Version
Bedienungsanleitung	DE	DE-062020-3.70
User Guide	EN	EN-062020-3.70

2. System Requirements

Operating System

The following operating systems are supported in English and German:

Operating system	Bit version
Windows 7	32 Bit and 64 Bit
Windows 8.1	32 Bit and 64 Bit
Windows 10	32 Bit and 64 Bit
Windows Server 2012 R2	64 Bit only

Software

The following software is required:

- Microsoft Excel 2013 (to enable opening and processing the export file(s) and to create an acceptance report)
- Adobe Reader 8 or higher

Web browser

The following browsers and versions are supported:

- Internet Explorer 11 or higher
- Firefox 49 or higher
- Chrome 53 or higher

Communication processor

For access to the fieldbus system at least one of the following devices or software products is required to access the industrial network

Network access	Order number	Hardware Version	Firmware Version	PROFIBUS Baud rate
TH LINK PROFINET	10003034 GDA-JA-003037	3.0	4.3.0.0 and prior	-
TH LINK Industrial Ethernet (PROFINET, EtherNet/IP, Modbus TCP)	10003037 GDA-JY-003037	3.0	4.3.0.0 and prior	-
TH LINK PC Industrial Ethernet (PROFINET, EtherNet/IP, Modbus TCP)	10003028 LRA-JY-003028	-	4.3.0.0 and prior	-
TH LINK PROFIBUS	10003006 GEA-JN-003006	2.0	7.0.2.1 and prior	Max 1.5 Mbit/s
xEPI 2	10002416 GEA-JN-003010	2.0	7.0.1.3 7.0.0.0 and prior	Max 1.5 Mbit/s

Licensing

The following license types are available:

License	Order number	Description
TH SCOPE Demo License	-	30 days Demo License with full functionality like TH SCOPE license
TH SCOPE (software key)	LRA-JY-003024	The following protocols are supported by TH SCOPE: PROFIBUS, PROFINET, EtherNet/IP, Modbus TCP. All TH SCOPE functions are available (see TH SCOPE user manual)
TH SCOPE (hardware key)	LRL-JY-003025	The following protocols are supported by TH SCOPE: PROFIBUS, PROFINET, EtherNet/IP, Modbus TCP. All TH SCOPE functions are available (see TH SCOPE user manual).

3. Scope of Release

- TH SCOPE
- User Guide
- Release Notes

For software and documentation visit the download area on our web site at <http://industrial.softing.com/en/downloads.html>.

4. New and changed functions

New functions

- Automatic detection of IP configuration changes for TH SCOPE and TH LINK PC
- Automatic address range calculation for class B networks.
- Extension of the user-defined address ranges from 5 to 8.
- Display of controller connection in the topology of the TH SCOPE.
- Hiding the "Check correct GSDML" diagnostics for "Substitute" modules.

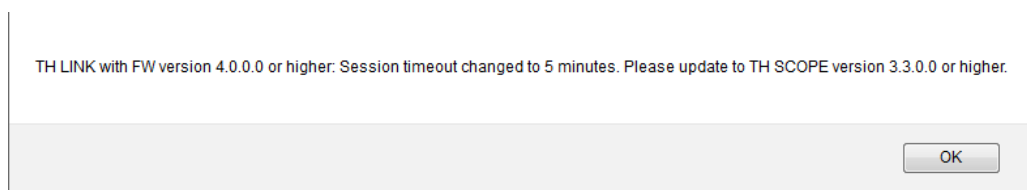
Changed functions

- Increased stability

5. General Notes

We reserve the right to make technical changes in product or documentations including Release Notes. The current versions are available at www.softing.com.

- Data that cannot be queried from the device because the device does not provide them are displayed with "n.a." for "not available".
- Data that cannot be determined are not incorporated in the calculation of sums.
- You can find protocol-specific notes in the Release Notes of the respective TH LINK.
- If TH SCOPE is running with a firmware v3.2 or lower, and is monitoring TH LINK devices with a new firmware v4.0, problems with admin time might occur. Since the admin time was set to 5 minutes (from 10 minutes), the new TH LINKs logout automatically after 5 minutes. However, TH SCOPE users (v3.2 or lower) stay logged-in for another 5 minutes. Any configuration or set-up of the TH LINKs during that time is not possible. The respective message is shown:



To solve that issue, the user needs to close the browser tab and has to open a new tab with TH SCOPE. The browser session does not need to be shut down.

6. Known issues

- Windows 2012 Server
 - The license dongle driver delivered by Softing license manager doesn't detect the dongle. Work around:
Please download the "Sentinel HASP/LDK - Windows GUI Run-time Installer 6.64 (Release 2014-08-01)" driver directly from the manufacturer web site. See:
<http://sentinelcustomer.safenet-inc.com/sentineldownloads/?s=&c=End+User&p=Sentinel+HASP+HL&o=all&t=all>) and install it.
- If the controller is not within the monitoring range, all with him communicating devices are displayed yellow as not parameterized.
- OPC UA Server cannot be installed under OS Windows 10 17.

7. Bug fixes

- None

8. Release History

Changes in release	3.6.0.0	12-Mar-2018
---------------------------	----------------	--------------------

New and changed functions

- Extended name check in the acceptance area
- Operator in Firmware Whitelist
- Increased stability

Bug fixes

- None

Changes in release	3.5.0.0	15-Feb-2017
---------------------------	----------------	--------------------

New and changed functions

- Inventorying of PROFINET-devices (module, submodule) and Ethernet components (e.g. network PC and cameras) via OPC UA
- Measuring jitter, load ratio, and update interval and integration of those units in the acceptance report
- Support for OPC Classic has been discontinued

Bug fixes

- TH LINK PROFIBUS now supports diagnosis of ABB S800
- Portloads >100% will not be shown anymore
- Several bug fixes

Changes in release	3.4.0.0	10-July-2017
---------------------------	----------------	---------------------

New and changed functions

- Inventorying of PROFINET-devices (module, submodule) and Ethernet components (e.g. network PC and cameras)
- Grouping of any number of TH LINKs (networks) in user-defined groups
- Standard settings (viewer settings) that can be set by the user
- Renaming of busCHECK Analyzer IE into dataCHECK Analyzer IE (Order numbers persistent: LRA-JY-003041)
- Additional information via integrated OPC UA server (state information)

Bug fixes

- None

Changes in release	3.3.0.0	10-Jan-2017
---------------------------	----------------	--------------------

New and changed functions

- Location information of devices can be assigned
- Editable device names for EtherNet/IP-devices
- OPC UA Server running in TH SCOPE
- Devices can be configured as “Docking Devices” and will be excluded from failure alerting, if the device cannot be reached (expected behavior)

Bug fixes

- None

Changes in release	3.2.0.0	18-Aug-2016
---------------------------	----------------	--------------------

New and changed functions

- Automatic export (inventory and topology data)
- Device blacklist configuration for TH LINK Eth
- Cable length in acceptance test report
- Attenuation thresholds depending on cable length
- Zoom in / zoom out for graphical topology, improved usability for touch screens
- Configuration options diagnostics list
- Persistent GUI language settings
- Support Windows 10
- Improved layout acceptance test report
- Update Softing CI
- Corrected filtering
- Acceptance test report does not require Excel
- Password lockdown issue

Bug fixes

- None

Changes in release	3.1.0.0	09-Feb-2016
---------------------------	----------------	--------------------

New and changed functions

- Create an acceptance report for PROFINET networks
- Detecting duplicated IP addresses
- Displaying line depth (in topology view)
- Displaying cable length (if supported by the monitored devices)
- Support of TH LINK PROFIBUS devices (they have already been supported by version 2.2 and earlier but not by version 3.0)

- Layout- and usability improvements

Bug fixes

- None

Changes in release 3.0.0.0 20-Aug-2015

New and changed functions

- New development of user interface using HTML 5 technology (Adobe Flash no longer required)

Bug fixes

- None

Changes in release 2.2.0.0 21-May-2015

New and changed functions

- Support GSDML files, clear text messages
- Configuration of TH LINK persistence function

Bug fixes

- None

Changes in release 2.1.0.0 16-Jan-2015

New and changed functions

- Display of the maximum utilization per port in the tabled topology view
- Better usability of the PROFINET Report Template caused by usage of macros
- Adobe Flash player 14.0 or higher is necessary
- In the graphical topology view wrong red connections between stations were displayed as well as disconnection to end-devices instead of an existing connection

Bug fixes

- None

Changes in release 2.0.0.0 30-Sept-2014

New and changed functions

- Support of the operating system: Windows Server 2008
- Excel-Template for a PROFINET Report including Quick start guide and an example is offline available in the installation directory
- Changed Corporate Identity

- Licensing via Softing License Manager: Software or Dongle License possible
- Renaming of “Acceptance Measurement” to “Quick Check Measurement”
- Now default sorting in the network overview matches with the sorting in the navigation tree
- In the Quick Check Measurement report the location was not displayed correctly

Bug fixes

- None

9. Frequently Asked Questions

Access

Q: How many people can access the TH LINK via web at the same time?

A: Up to six people can access on the TH LINK simultaneously. Once a person logs onto the TH LINK as an administrator, no one else can access it.

Time display

Q: I selected **Yes** in **Use time server**, but I always get a time stamp of the year 1970. Why is that so?

A: It may be that the time server you set is not available from your network. Below the time server setting there is a possibility to test the set time server by clicking on the respective button. If no current date is displayed, please check your settings. If there is no time server available from your network, you have the possibility to take over the computer system time by selecting **No** for **Use time server**. Then click on the button **Synchronize**.

Protocol specific questions you can find in the Release Notes of the respective TH LINK.