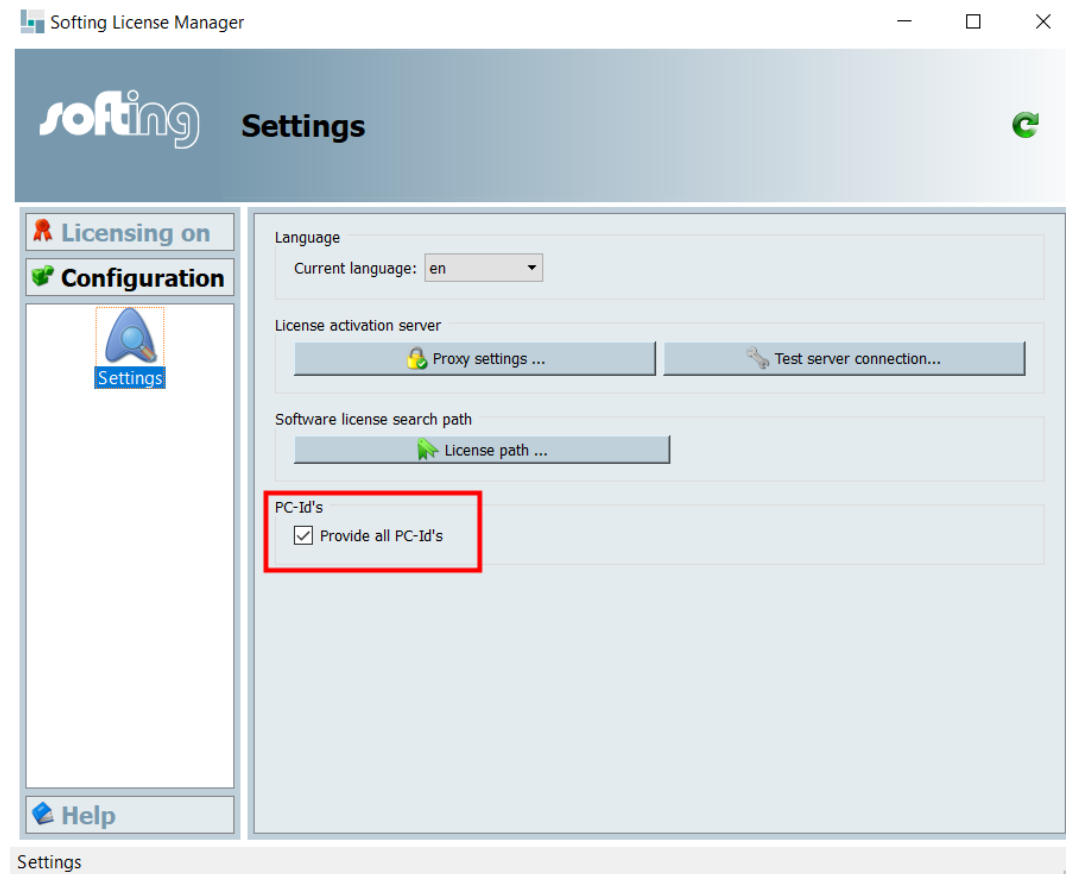


How to activate a license

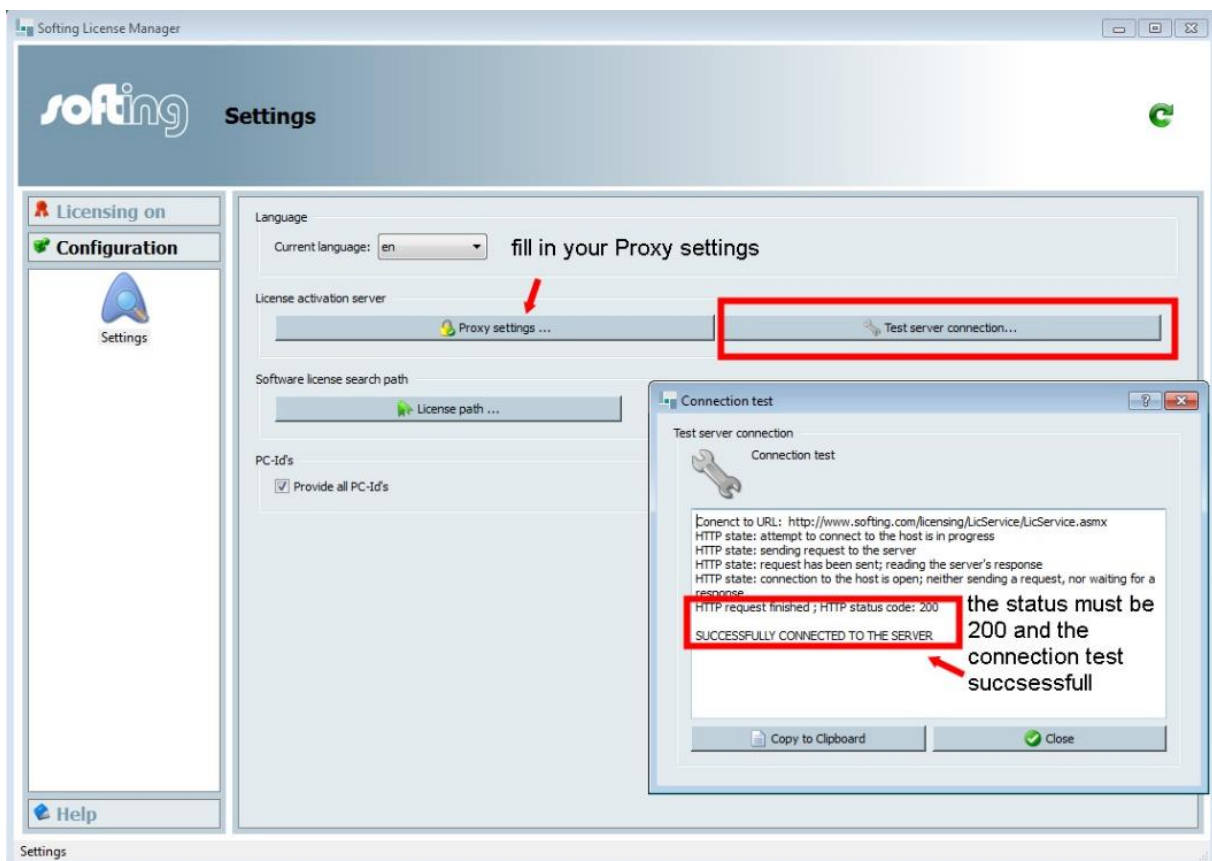
1. Activate license with internet connection
2. Activate license without internet connection

1) Activate license with internet connection

1. First of all, please enable “Provide all PC-Id’s” under Settings.



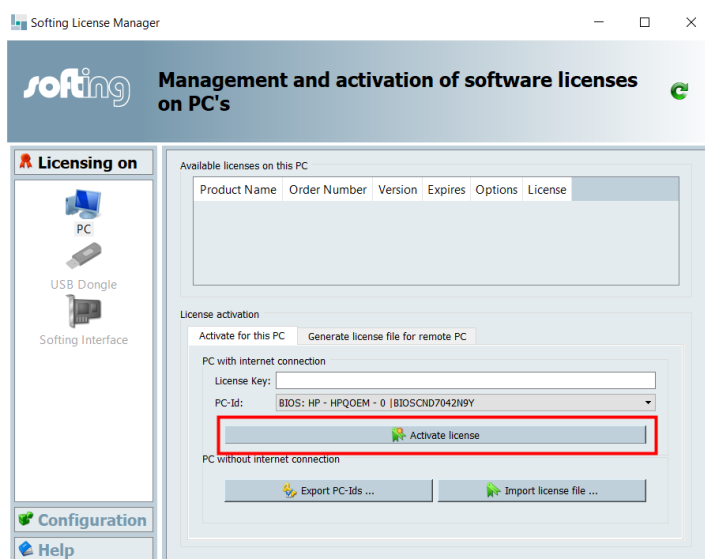
2. Please check if the Softing License Manager V4 can connect to the Softing license server.



Please check the connection from the license manager to our server. If that connection test is not successful, please check the proxy settings. The connection test status must be 200 to activate the license.

If you cannot set up a connection, please skip to section 2

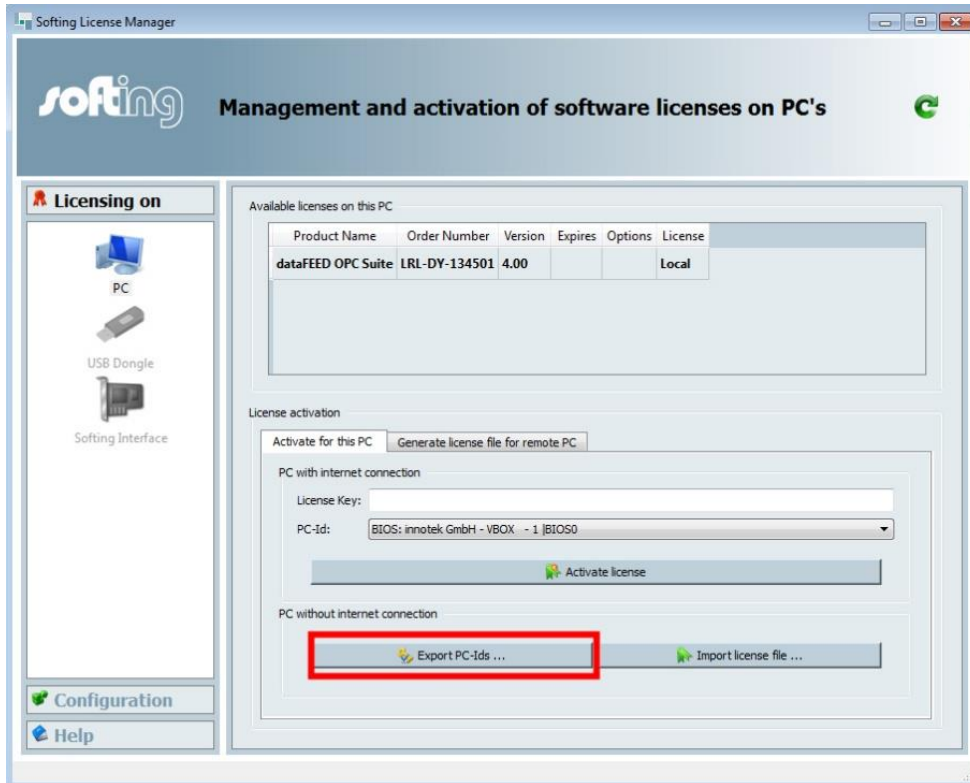
3. If connection test is successful, please select the desired PC-Id, which should be used for the activation process, type in the License Key and press "Activate license". That's it.



2) Activate license without internet connection

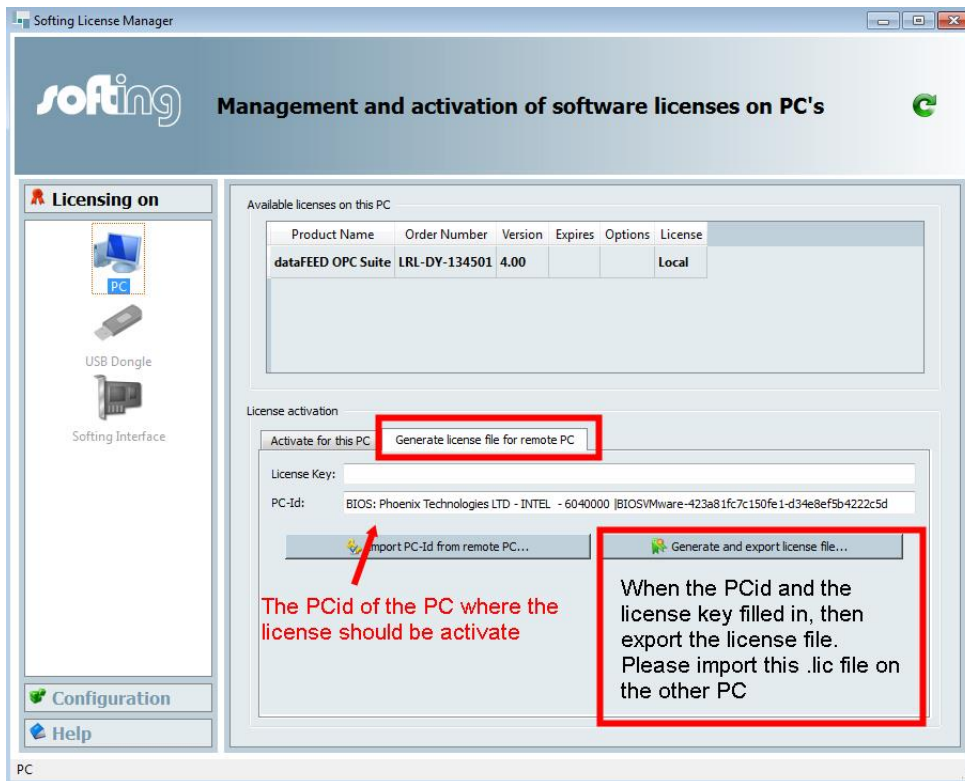
Only follow these steps if the connection test (1.1) was unsuccessful.

1. Export the PC-Id, from the PC which should finally get an activated license file



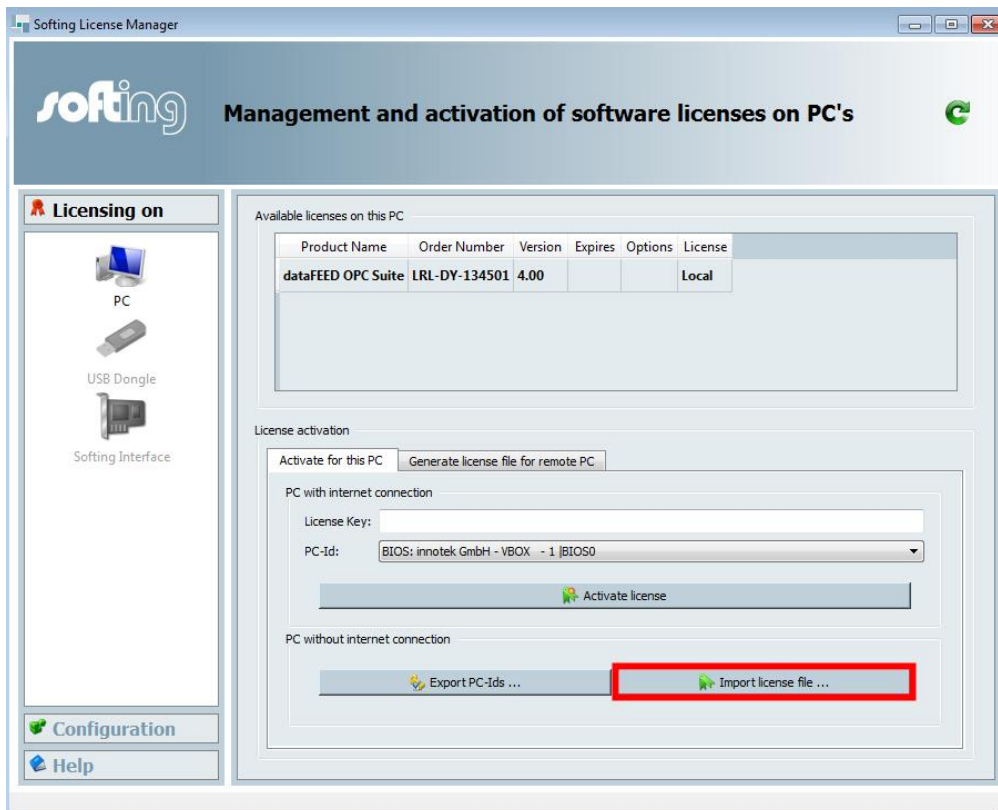
2. Install the Softing License Manager V4 on another PC **with Internet** connection
<https://data-intelligence.softing.com/de/produkte/opc-software-plattform/datafeed-opc-suite/#tx-dftabs-tabContent2>
3. Please check again the connection to the Softing license Server and the “Provide all PC-Id’s” option (See 1.1 and 1.2)

4. Go to section “Generate license file for remote PC”



Import the remote PC-Id (see step 2.1)
Fill in the valid license key, which has been sent to you.

5. Click “Generate and export license file” and save it
6. Import the .lic file on the PC which should be licensed



If it is successful, the license manager should provide the license as a local license.