


	<p style="text-align: center;">Application Note FG-110 FF and dataFEED OPC</p>	
--	---	---

Application Note FG-110 FF

Use of FG-110 FF together with dataFEED MODBUS

Index

1 Purpose of this document.....	2
2 Configuration	2
2.1 Configuration of dataFEED OPC Suite	2
2.2 Modbus Mapping	4
3 Configuration of OPC Demo Client.....	6
3.1 Configuration	6
3.2 Using the OPC Client.....	8

1 Purpose of this document

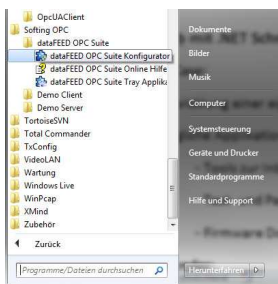
This document describes how to use FG-110 FF together with the Modbus OPC Server solution “dataFEED”

2 Configuration

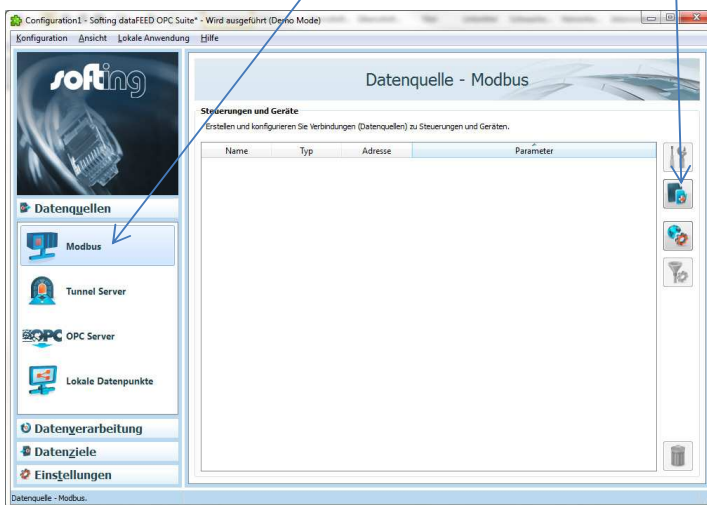
2.1 Configuration of dataFEED OPC Suite


Before you start with the configuration of the dataFEED OPC Suite please make sure that the Softing FG-110 FF Gateway is configured mean the Foundation Fieldbus devices are running and the Modbus mapping was done.

After the installation of the dataFEED software package (make sure you have a correct license) you can start the dataFEED configuration suite.

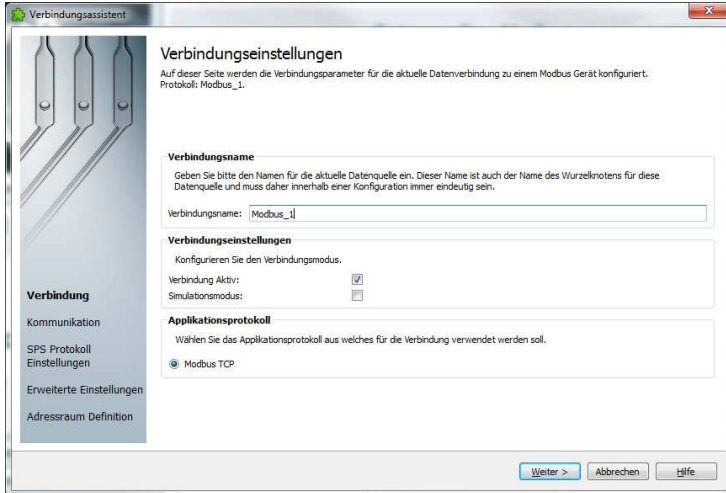


Choose the data source “Modbus” and click on the icon “Add data source”

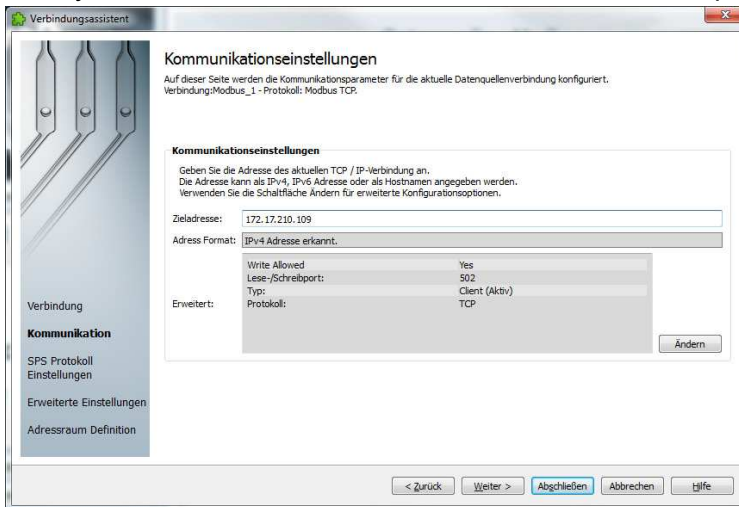


	<p>Application Note</p> <p>FG-110 FF and dataFEED</p> <p>OPC</p>	
--	---	---

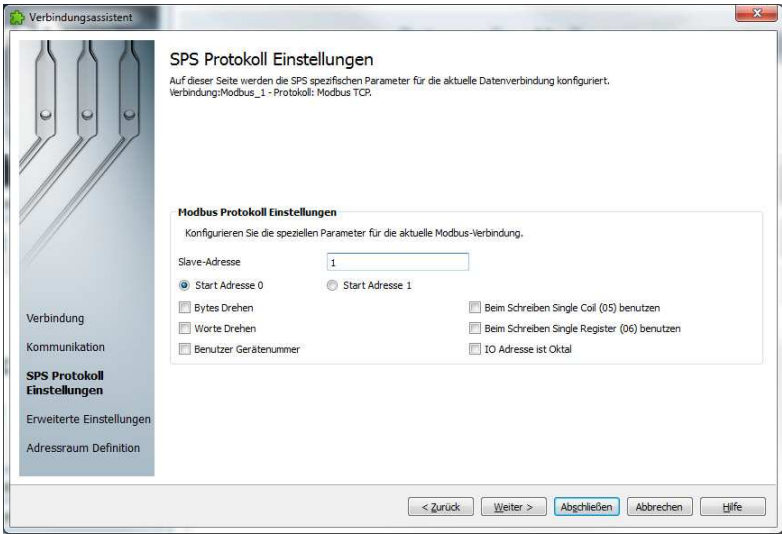
Now a configuration wizard starts and will guide you through the configuration steps.



Here you can enter the name of the connection and then press continue.



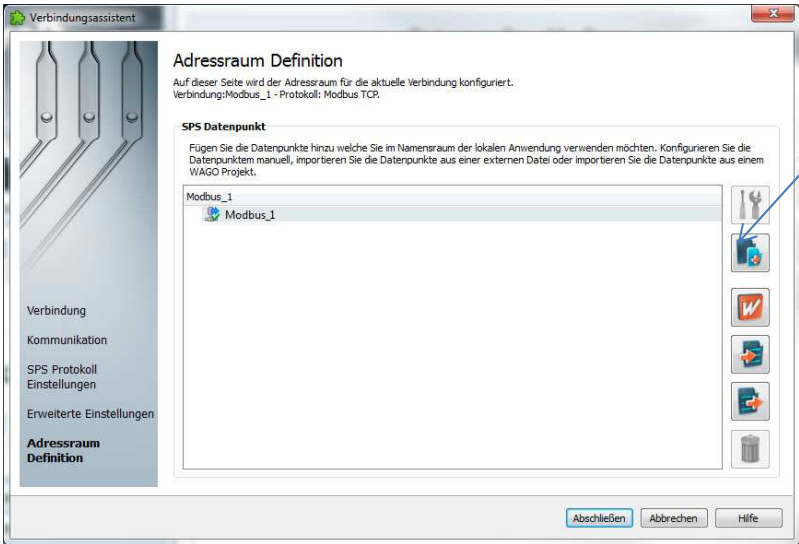
Enter the IP address of the FG-110 in the field “Target address” and click on the button “Continue”.




Here is it possible to do some special Modbus configuration. By default all these parameter can stay untouched.

2.2 Modbus Mapping

For the mapping of Modbus Register to OPC data points please click on the icon “Add new item”



	Application Note FG-110 FF and dataFEED OPC	
--	--	---

For all data points (nodes) the following information's have to be provides:

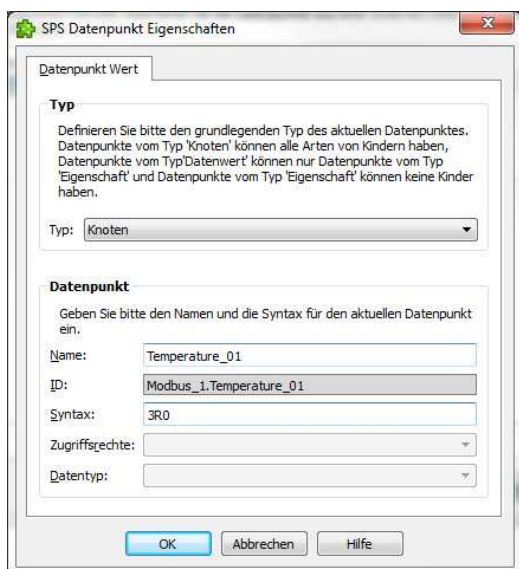
1.) Name

The name of the data point can be a string.

2.) Syntax

The field "Syntax" describes:

- a. Type of the Modbus Register (3xxxx or 4xxxx)
- b. The data type of the value (Float or Integer)
- c. Relative register



Examples:

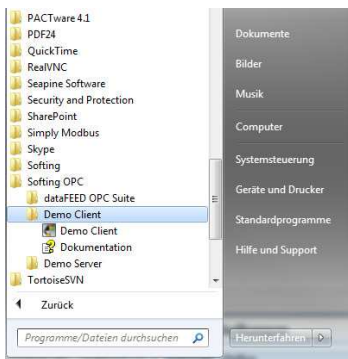
- 3R0 → Float value of Modbus Register 30001.
- 4R2 → Float value of Modbus Register 40003.
- 3R100.3 → 3 Float values starting with Modbus Register 40101.

When the Modbus Mapping is finished please click on "Finish" and start the OPC Server

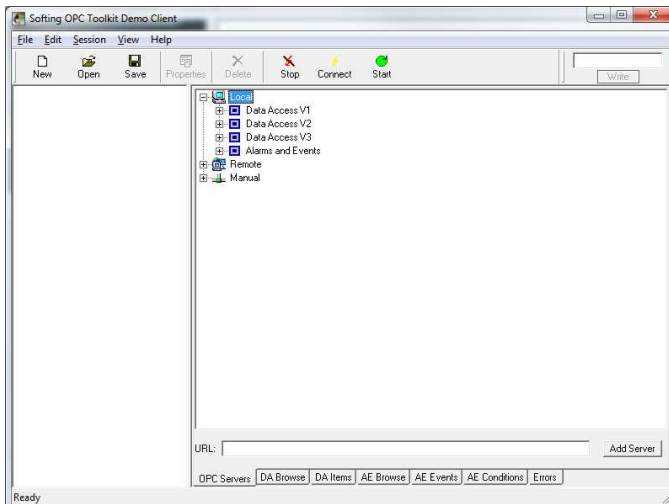
3 Configuration of OPC Demo Client

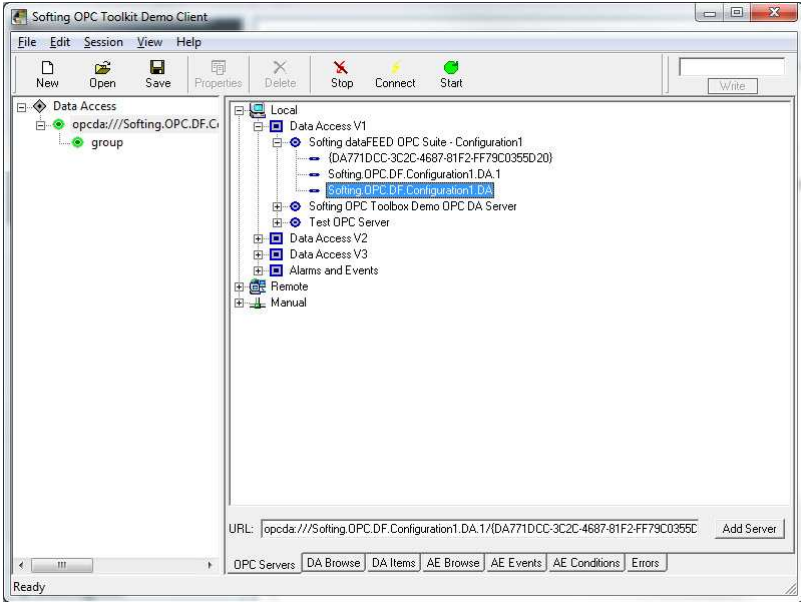
3.1 Configuration

To start the OPC Demo Client tool please click on Windows Start Button and choose the folder “Softing OPC” and “Demo Client”.



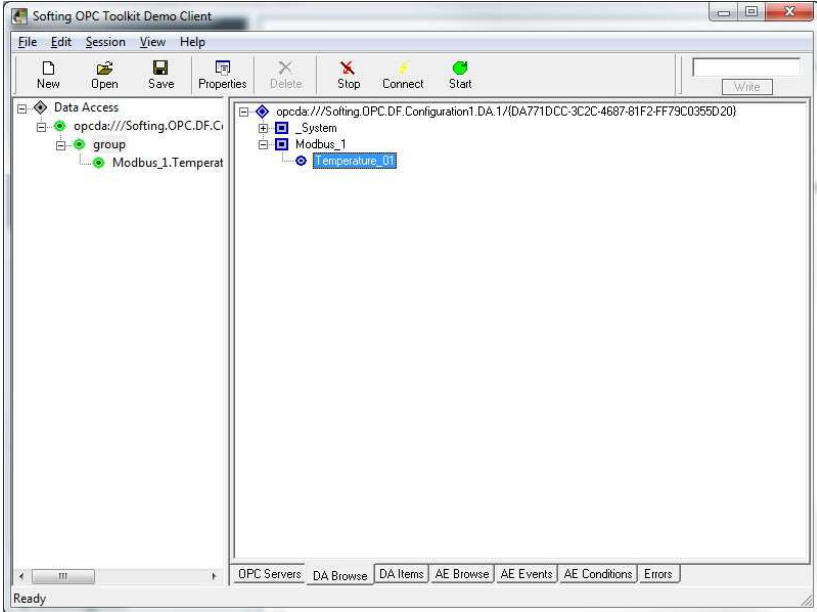
After starting the Demo Client Tool we have to decide if the OPC server is located “Local” or “Remote”. The workflow for both scenarios is the same.





Choose under “Data Access V1” the correct OPC Server and make a double click on it. Now you see two green dots in the tree view.

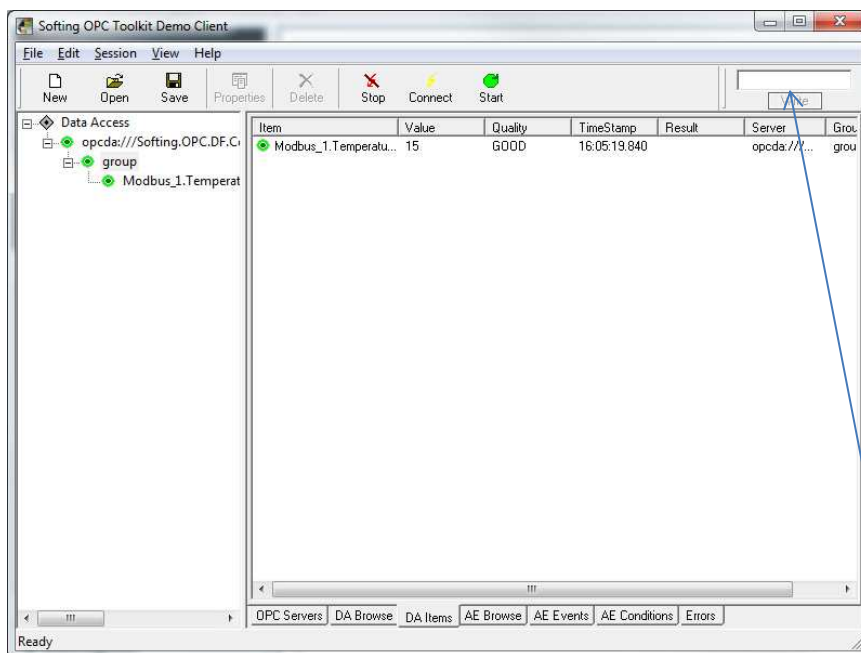
For data access please click on the folder “DA Browse” and make double clicks on all points you like to monitor with the OPC client tool.



3.2 Using the OPC Client

For monitoring the values you have to configure the OPC client tool like it is describe in chapter 3.1.

By choosing the folder “DA Item” you will see all configured point.



In case of a writeable Modbus register it is also possible to right a single value to the register.

SOFTING Industrial Automation GmbH

No part of this document may be reproduced (printed material, photocopies, microfilm or other method) or processed, copied or distributed using electronic systems in any form whatsoever without prior written permission of SOFTING Industrial Automation GmbH.

The manufacturer reserves the right to make changes to the scope of supply as well as changes to technical data, even without prior notice. A great deal of attention was given to the quality and functional integrity in designing, manufacturing and testing the system. However, no liability can be assumed for potential errors that might exist or for their effects. Should you find errors, please inform your distributor of the nature of these errors and the circumstances under which they occur. We will be responsive to all reasonable ideas and will follow them up, taking measures to improve the product if necessary.

We call your attention to the fact that the company name and trademark as well as product names are, as a rule, protected by trademark, patent and product brand laws.

All rights reserved.