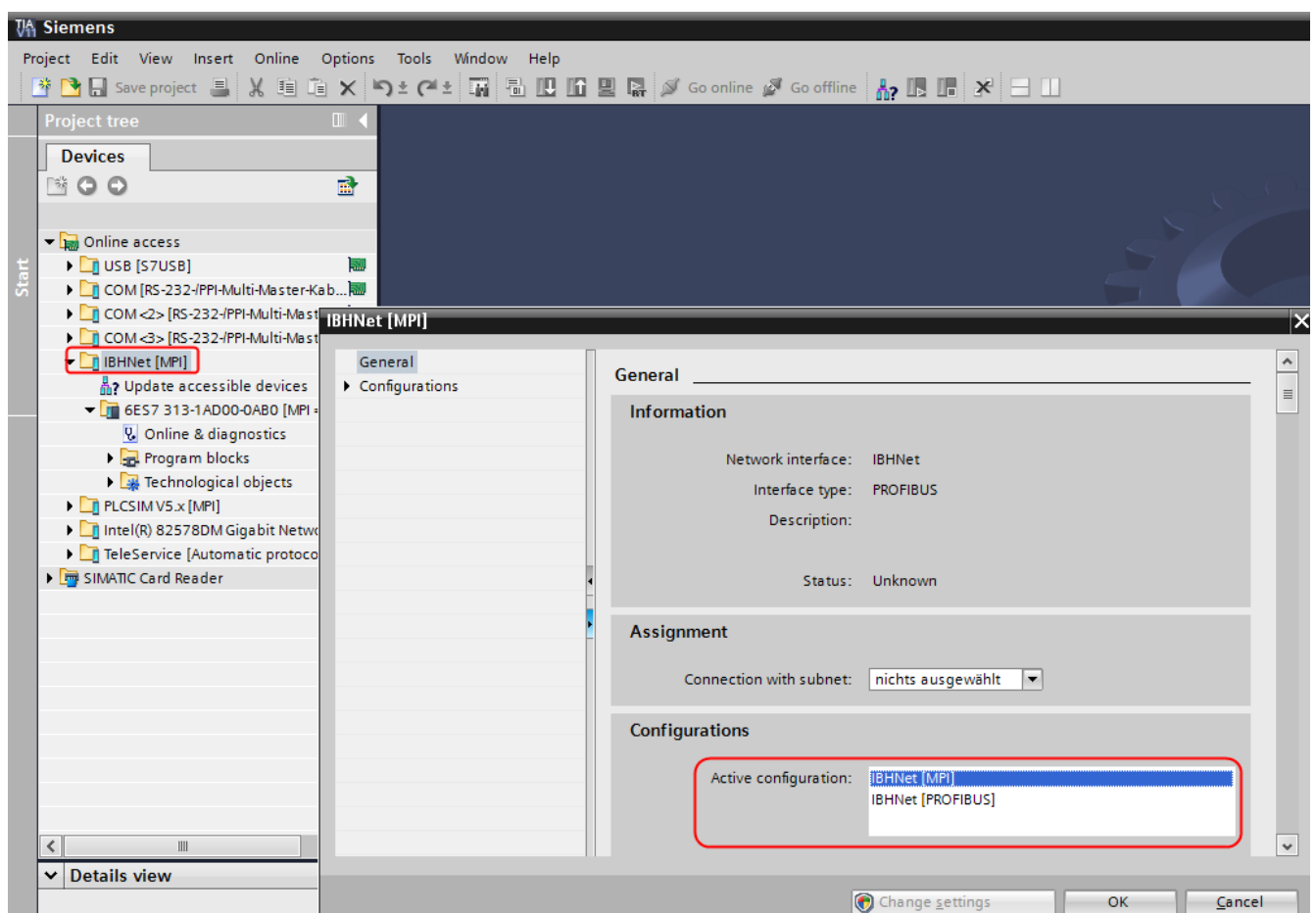


echolink S7-compact TIA Settings

Once the installation and configuration of the **IBHNet** driver has been completed successfully please run your copy of the TIA Portal. In the project tree **IBHNet** appears as device in the branch "Online access". In the properties, it can be chosen whether it is MPI[®] or Profibus. Set the interface settings according to your needs.

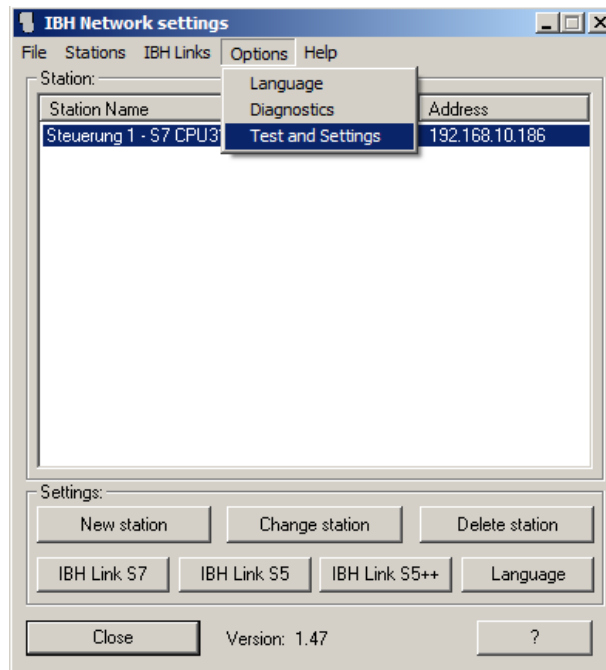
The "Interface state" reports "Interface state is unknown". This is normal, since the **IBHNet** driver is not a physical Siemens device that is inserted in the PC.

Since the menu item "Extras ⇒ Set PG/PC interface" to set the Interface does not exist in the TIA Portal, the connected station must be chosen from within the settings in the **IBHNet** driver.

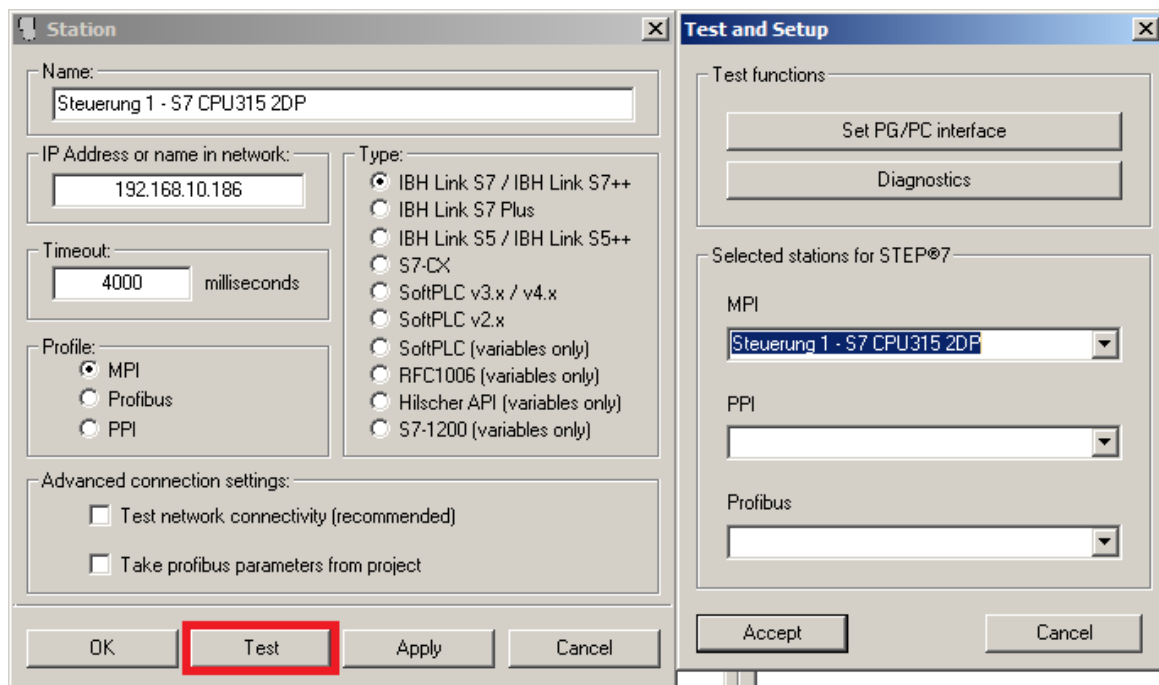


From "Start ⇒ Programs ⇒ IBHNet" run the program "Administrate IBHNet stations"

The screen as shown below will be displayed:



With "Options - Test and Settings" a Dialog opens. In this Dialog, the **IBHNet** Stations configured for online access can be chosen.



Alternatively, the setting can also be made in station dialog by clicking the button "Test" in the configuration dialog of the station.

The configuration is now completed!

Online access with the TIA Portal over the selected **IBH Link** is now possible.