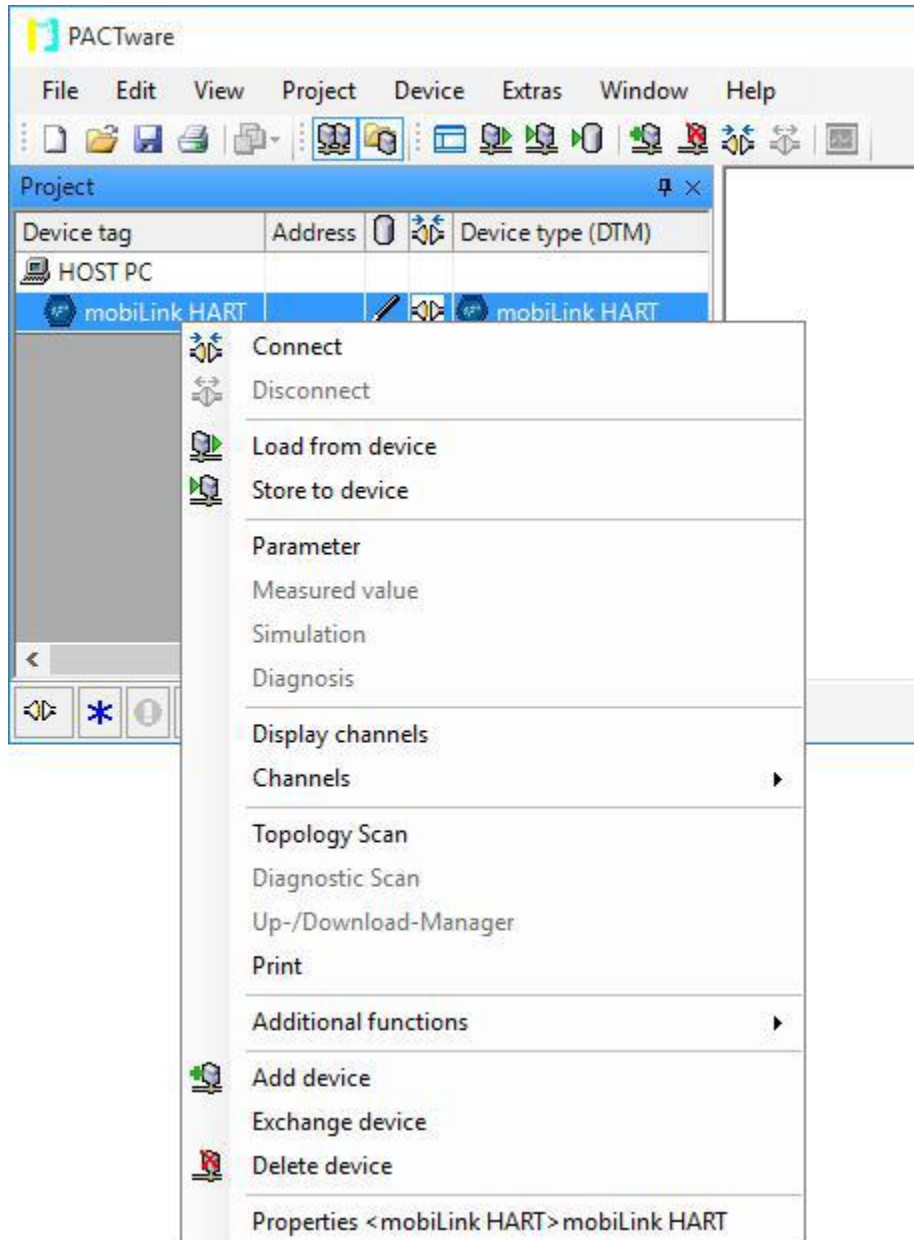
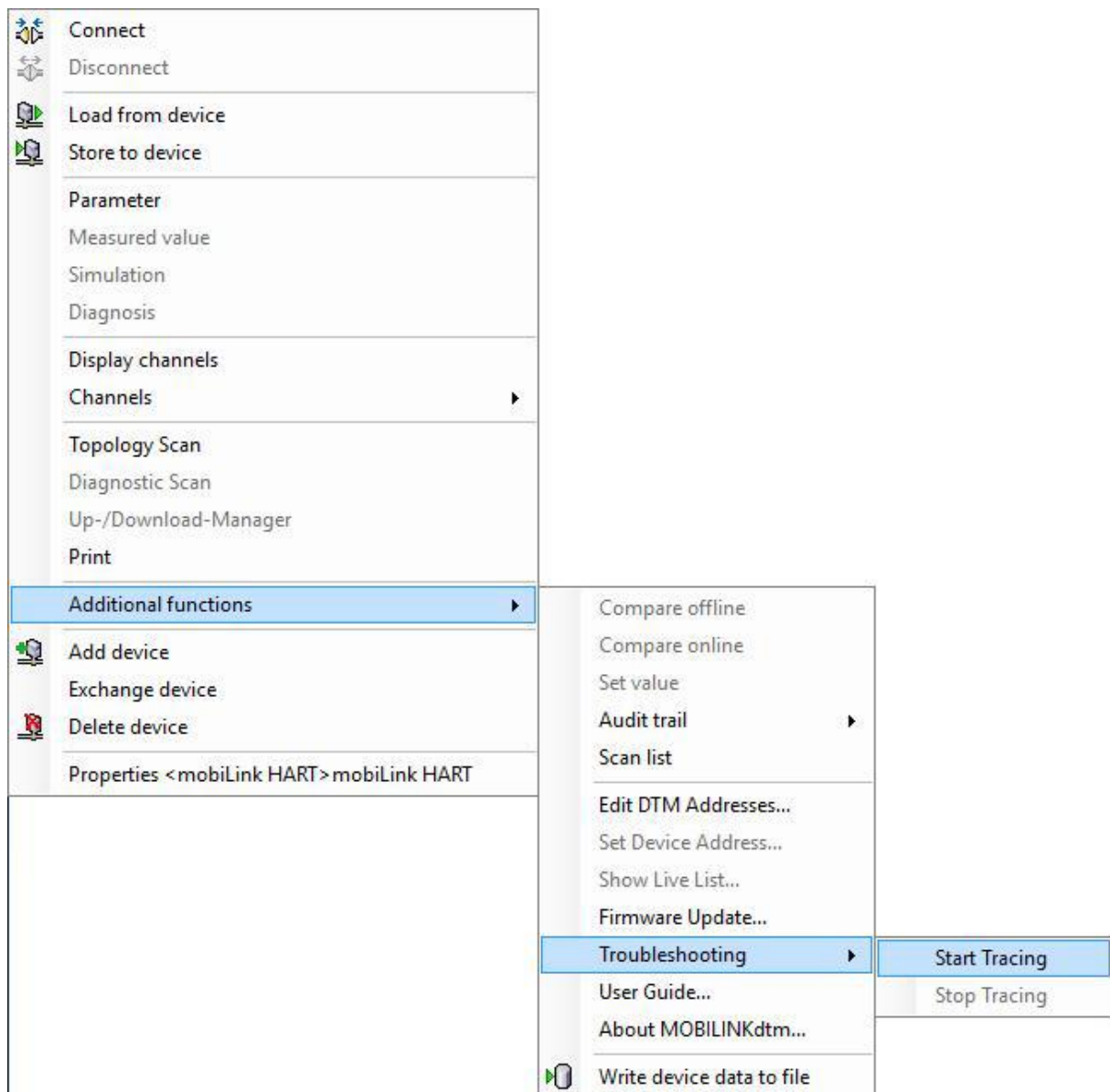


## MOBILINKdtm Traces

The trace functionality of MOBILINKdtm can be typically accessed from the context menu. Right-click a **mobiLink HART**, **mobiLink FF** or **mobiLink PA** node in the project view to open the context menu.



To start the tracing of MOBILINKdtm navigate in the context menu to **Additional functions** → **Troubleshooting** → **Start Tracing**.



When tracing is enabled, the program flow within MOBILINKdtm and detected errors are written to files.

In case of error/ unexpected behavior carry out the following steps:

- Start the tracing with the Start Tracing function.
- Repeat the error.
- Stop tracing as soon as possible after the error has occurred using the Stop Tracing function.

After performing these steps, you will find the trace files in the following directories:

%LOCALAPPDATA%\Softing\MOBILINKdtm\Trace\MOBILINKdtm.trc

%LOCALAPPDATA%\Softing\DTMToolkit\Trace\siadtmb130.trc

In case you are using the mobilink FF DTM then the FF-CIT traces can also be useful for further investigation. How to enable the FF-CIT traces is described on our FOUNDATION Fieldbus FAQ site:

<https://industrial.softing.com/de/services/support/foundation-fieldbus.html>